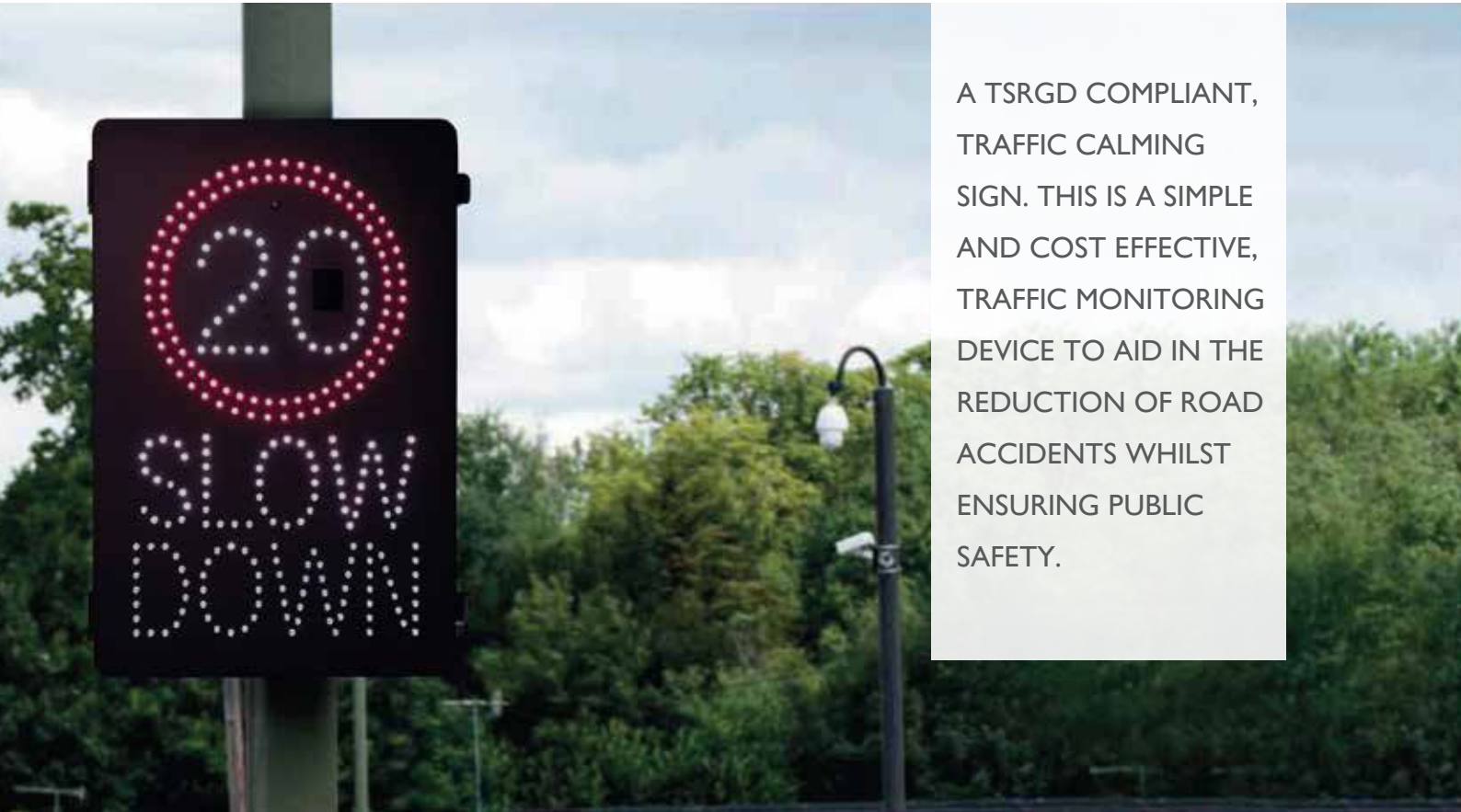


URBAN SPEED SIGN 20/30



A TSRGD COMPLIANT, TRAFFIC CALMING SIGN. THIS IS A SIMPLE AND COST EFFECTIVE, TRAFFIC MONITORING DEVICE TO AID IN THE REDUCTION OF ROAD ACCIDENTS WHILST ENSURING PUBLIC SAFETY.

Messagemaker Displays is one of the UK's leading suppliers of Vehicle Activated Speed Signs, with over 20 years experience in the design, supply and manufacture of effective speed calming solutions.

As road usage continues to increase it is acknowledged that speeding motorists are a danger on the roads and to communities.

Many urban areas around the UK are seeing the usual 30mph speed limit drop down to 20mph to improve traffic flow, decrease traffic collisions and improve pollution. Highlighting the legal road limit of a given area to a speeding driver is a proven method of speed reduction, so highlighting a change in the speed limit is all the more important.

Vehicle Activated Speed Signs are an invaluable tool in monitoring speed and traffic movements as well as an effective speed reduction tool.

The new **Urban Speed VAS** reinforces the speed limit of the road to speeding vehicles, accompanied with a "Slow Down" message. This sign also conforms to TSRGD for UK Highways Compliance.

As a standard, this device has TSRGD numerals and symbols to keep up to date with the consistency of the highways. The device has the option to display a 20mph or 30mph speed limit.

To maintain their energy efficient quality, all speed signs are fitted with light sensors to auto-dim the LED's during night-time use. The intelligent SMD LED technology ensures there is minimum light pollution.

KEY POINTS

- ▶ UKCA/CE Certified
- ▶ TSRGD compliant symbols
- ▶ 20mph or 30mph option
- ▶ Easily relocatable using custom post mounting plates
- ▶ Integrated Vehicle Detection RADAR
- ▶ 'SLOW DOWN' message
- ▶ Viewing up to 100 metres
- ▶ User adjustable 'Display Duration'
- ▶ Auto-dim facility for day and night time use
- ▶ Requires minimal power for efficiency
- ▶ Powered by battery, solar power or 230 volt mains power
- ▶ Vehicle data capture option available
- ▶ 4G Modem Upgrade: Allows remote access for data download, trigger speed changes and scheduling options.
- ▶ Fully weatherproof



TECHNICAL INFORMATION		USL
DIGIT/ROUNDEL SIZE		300mm Digit Height
ENCLOSURE DIMENSIONS (HXWXD)		660mm x 430mm x 150mm
TRIGGER SPEEDS		5 - 65MPH
DISPLAY ON TIME		0.5 - 7.5 seconds
WEIGHT WITHOUT BATTERIES		8Kg
RECHARGEABLE BATTERIES		12V - 22Ahr (Max 2)
TYPICAL OPERATING DURATION (battery powered models)	1 Battery	45,000 triggers
	2 Batteries	90,000 triggers