

# RENEWABLE ENERGY VMS

Highway compliant, off-the-grid Variable Message system



- Eliminates requirements for cabling & trenches - saving money & minimising road user dissatisfaction.
- Lightweight design - reduces framework and installation costs.
- Lower power consumption, reducing operating costs & lowering carbon footprint.

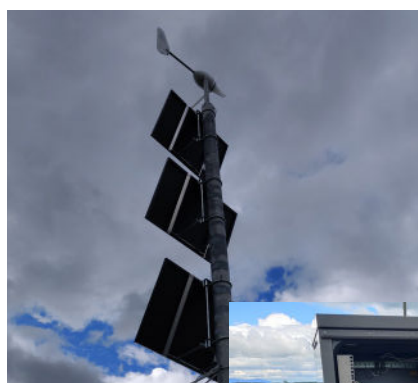
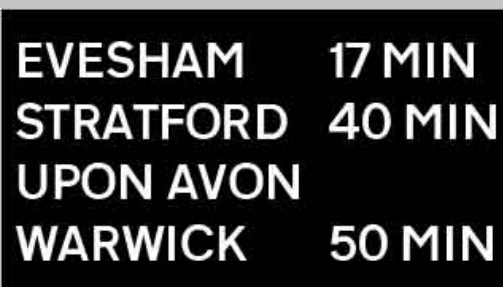
## THE SCREEN

Resolution	64 x 112 (20mm pixel pitch)
Display Size	1280 x 2240mm
Max characters	6 lines, 13 characters per line
Average power	115-150W
Weight	Approx. 140kg



## KEY FEATURES

- EN12966 and TSRGD compliant
- Compatible with all standard protocols, allowing integration with CHARM, UTMC & NTCIP
- Utilises Marlec's highway-approved renewable energy system



### SMART RENEWABLE ENERGY SYSTEM

- 3x high efficiency 250W PV panels
- 12v Marlec Rutland FM910-4 windcharger
- 6x 12v, 246Ah gel batteries
- TriStar 60A MPPT Morningstar Controller
- Highways approved, CE CR-700 Type road-side cabinet
- 10m raise/lower column for easy access



The combination of a battery-powered, low consumption VMS display along with Marlec's solar panel and wind turbine systems mean that not only are you reducing your carbon footprint and doing your part for the planet, but you're also saving thousands on trenching and cabling while minimising disruption to the roads.