

TOWER UNIT



ROBUST TEMPORARY VMS TRAFFIC SIGN SOLUTION WITH QUICK DEPLOYMENT

The requirement for temporary roadside information is ever increasing on the UK Highway system, and with highway space at a premium, Messagemaker Displays are now offering a portable and quickly deployable temporary sign solution.

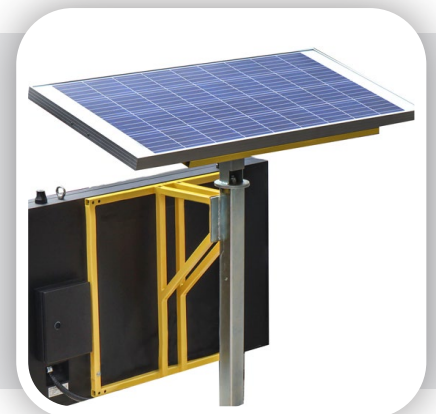
The Tower Unit from Messagemaker Displays is the ideal solution for communicating temporary information in areas where space is limited. The small footprint and retractable stabilizer legs also allow multiple units to be transported and deployed at one time.

KEY FEATURES

- ▶ Full Colour VMS supplied, fitted and configured
- ▶ 6 x 12v 100Ah rechargeable Leisure batteries
(supplied clamped in the base)
- ▶ Small footprint size of 1500 x 1500mm
(with extended stabilisers)
- ▶ Transport multiple units at once
- ▶ Minimal set-up required
- ▶ Unit weight approx. 400kg
- ▶ Instant messaging updates via 4G & RCS Software

SOLAR POWER

- ▶ An alternative to removing batteries for charging
- ▶ Increases battery life
- ▶ Reduces maintenance costs
- ▶ Fully rotatable for optimal performance



TECHNICAL SPECIFICATION

TOWER AND BASE

Overall Tower Height	2100 - 3500mm
Footprint with closed stabilisers	1000 x 1100mm
Footprint with Extended Stabilisers	1500 x 1500mm
Base Housing Material	Plated Steel &
Structure Material	Galvanised Steel
Power <i>(supplies VMS)</i>	6 x Rechargeable 12v 100Ah Leisure batteries



VMS SCREEN

Standard	EN12966
Housing Size <i>(h x w x d)</i>	965 x 1480 x 125 mm
Display Size <i>(h x w)</i>	768 x 1280 mm
Pitch Size	16 mm
Screen Resolution <i>(h x w)</i>	48 x 80 pixels
LED Type	3-in-1 SMD
Display Colour	Full Colour
Display Content Ability	Max 6 Lines of 13 Characters or 1 x Traffic Symbol
Interface	RS232 / RS485 / Ethernet / 4G
GPS Tracking	Included
Maintenance Access	Front of screen & base doors
IP Rating	IP65
Optional Extra	Vehicle Detection Radar

The VMS must be used within TSRGD specifications.