

## MINI UNIT



CONVENIENT  
AND EFFICIENT  
TEMPORARY LED  
TRAFFIC SIGNAGE  
SOLUTION

Variable Message Signs (VMS) and Vehicle Activated Speed Signs (VAS) are becoming increasingly popular on UK highways due to their energy-efficiency, ease of use and overall impact on safety across the UK.

Messagemaker Displays has added another benefit to these popular signs; convenience.

VMS and VAS Signs on the Mini Unit portable base are the ideal solution for temporary traffic management; whether for managing traffic around temporary roadworks, outside a construction site, speed reduction initiatives, or communicating messages for an event.

Mini Unit base Specifications;

- ▶ Riveted Galvanised Steel
- ▶ Lockable folding handle
- ▶ Lockable battery compartment
- ▶ Small footprint; 1890 x 1150 x 560mm (h x w x d)

Mini Unit base is available with;

- ▶ Variable Message Sign
- ▶ Vehicle Activated Speed Signs (3 models)

## MINI UNIT WITH VMS

For full technical information see page 3

### KEY POINTS

- ▶ UKCA/CE Certified (EN12966)
- ▶ Battery Powered
- ▶ User-friendly, web based fleet control software
- ▶ Easily deployed and relocated with lockable folding handle and pneumatic tyres
- ▶ Email or SMS alerts in the event of a power failure, extreme temperatures or communication error
- ▶ Energy Efficient; save at least 20% power compared to traditional VMS\*
- ▶ Solar Panel Auto shut-down function to prevent over-charging of batteries
- ▶ Supplied with 2 to 4 rechargeable 12v 100Ah Leisure batteries
- ▶ Viewing distance of at least 100 meters
- ▶ Full Colour VMS
- ▶ Excellent Contrast Ratio for clear messaging even in extreme weather conditions
- ▶ Auto-dim facility for day and night time use
- ▶ Option to integrate a vehicle detection radar
- ▶ Optional 4G modem with GPS Tracking

\* 'Traditional VMS' refers to VMS in the UK market which use DIP LED and a polycarbonate cover



### SAVE POWER, REDUCE SPEEDING

By integrating a vehicle detection radar the VMS can;

- ▶ Save power by only activating by passing motorists
- ▶ Have the option to be used as a Vehicle Activated Speed Sign



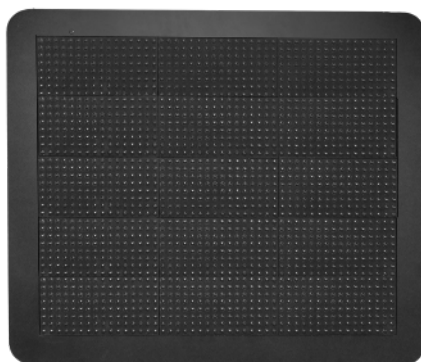
## MINI UNIT WITH VAS

For full technical information see page 4

### KEY POINTS

- ▶ UKCA/CE Certified (EN12966)
- ▶ Integrated vehicle detection radar
- ▶ Available with SID, SAM or SLR (see page 3 for details)
- ▶ Viewing distance of at least 100 meters
- ▶ User adjustable 'Trigger Speed' & 'Display Duration'
- ▶ Auto-dim facility for day and night time use
- ▶ 45,000 triggers per battery (max. 2 batteries per sign)
- ▶ Battery Powered
- ▶ Vehicle speed data capture option
- ▶ Solar Panel Auto shut-down function to prevent over-charging of batteries
- ▶ Supplied with one rechargeable 12v 22Ah battery (pre-fitted in sign)





	VMS-I6-40x48-RGB
Description	Full colour Variable Message Sign: pitch 16mm, Resolution 40x48 pixels
Standard	EN12966
Pitch Size	16 mm
LED Type	3-in-1 SMD
Display Colour	Full Colour
VMS Resolution (h x w)	40 x 48 pixels
VMS Display Size (h x w)	640 x 768 mm
Minimum Font Height	112 mm
Display Content Ability	Max 5 Lines of 8 Text Characters OR 1 x Traffic Symbol
Interface	RS232 / RS485 / Ethernet / 4G
Radar with Data Capture	Optional Extra
GPS Tracking	Optional Extra
Power	230V AC or 12V DC (Battery Powered)
Battery	2 to 4 12v 100AH batteries with optional solar panel
Housing Material	Aluminium (Black)
Housing Size (h x w x d)	2240 x 1240 x 1000 mm
Weight	230kg with batteries (150kg without)
Maintenance Access	Front

VMS operated on UK highways must be used in accordance with TSRGD guidelines

## SID

### Speed Indicator Device

This sign will only activate for passing motorists travelling over the speed limit.



## SLR

### Speed Limit Reminder

This sign will only activate for passing motorists travelling over the speed limit.



## SAM

### Smiley Activated Sign

For motorists over the speed limit:

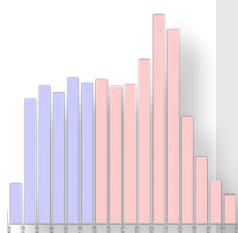


For motorists under the speed limit:



		SID	SLR	SAM
Digit/roundel size		300mm Digit Height	300mm Roundel size	300mm Digit Height
Enclosure dimensions (h x w x d)		660mm x 430mm x 150mm	660mm x 430mm x 150mm	710mm x 430mm x 150mm
Trigger speeds		5 - 65MPH		
Display on time		0 - 7.5 seconds		
Weight without batteries		8Kg		
Rechargeable batteries		12V - 22Ahr (Max 2)		
Typical operating duration	1 Battery	45,000 triggers		
	2 Batteries	90,000 triggers		
LED Colour(s)		AMBER 'Slow Down' AMBER Digits	WHITE 'Slow Down' RED Roundel WHITE Digits	GREEN 'Smiley' RED 'Sad Face' AMBER Digits
Mechanical Protection		IP65		

*Important Note: Messagemaker Displays and Stocksigns Ltd recommend the SAM sign is not used on the public highway; it is designed for use on private roads.*



### OPTIONAL EXTRA: DATA CAPTURE

Each model of VAS is available with Data Capture.

This feature provides reports on passing traffic and includes vehicle counts and speed analysis with dates and times.